

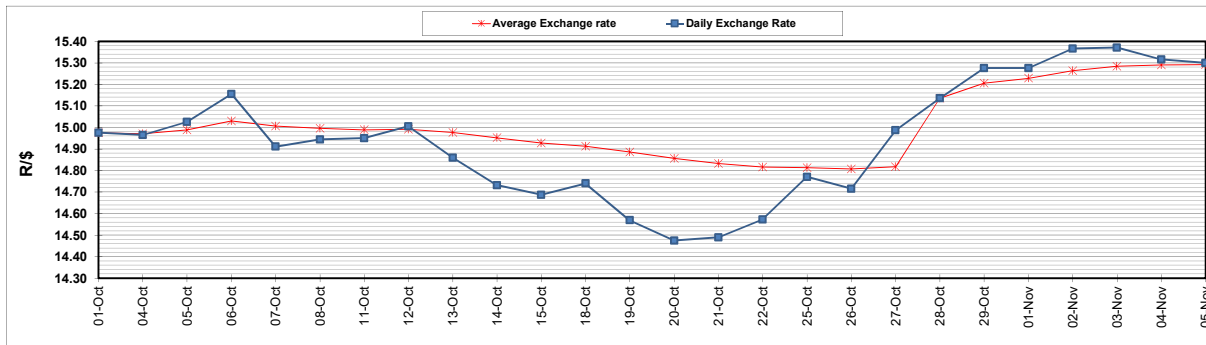
	PETROL 95 ULP	PETROL 93 ULP & LRP	DIESEL 0.05%	DIESEL 0.005%	ILL. PAR.
GAUTENG PUMP PRICE (SA c/l) AS FROM 03/11/2021	1,954.000	1,932.000	-	-	-
WHOLESALE PRICE (SA c/l) AS FROM 03/11/2021	-	-	1,719.980	1,723.380	1,125.488
SINGLE NATIONAL MAXIMUM RETAIL PRICE	-	-	-	-	1,433.000
BASIC FUEL PRICE - 05/12/2021 (SA c/l)	953.234	931.368	930.137	935.734	922.547
PRESS RELEASE CONTRIBUTION TO BFP 03/11/2021 - 05/12/2021 (SA c/l)	937.110	925.110	917.630	921.030	912.128
UNIT OVER/(UNDER) RECOVERY - 05/12/2021 (SA c/l)	(16.124)	(6.258)	(12.507)	(14.704)	(10.419)
AVERAGE BASIC FUEL PRICE 28/10/2021 - 05/12/2021	985.228	962.995	935.092	941.143	930.663
AVERAGE UNIT OVER/(UNDER) RECOVERY 28/10/2021 - 05/12/2021	(116.003)	(105.772)	(100.891)	(103.541)	(101.392)

ANALYSIS MOVEMENT OF AVERAGE OVER/(UNDER) RECOVERY

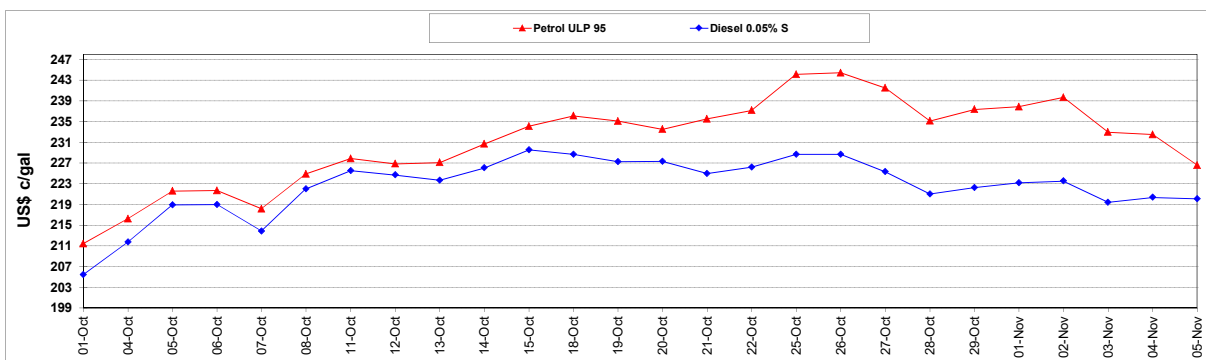
	PETROL 95	PETROL 93	DIESEL 0.05%	DIESEL 0.005%	ILL. PAR.
- MOVEMENT IN INTERNATIONAL PRODUCT PRICES	(85.489)	(75.945)	(71.929)	(74.393)	(72.567)
- MOVEMENT IN EXCHANGE RATE	(30.515)	(29.826)	(28.962)	(29.149)	(28.825)
AVERAGE UNIT OVER/(UNDER) RECOVERY 28/10/2021 - 05/12/2021	(116.003)	(105.772)	(100.891)	(103.541)	(101.392)

R/\$ EXCHANGE RATE - (R/\$15.2990 - 05/12/2021)

EXCHANGE RATE USED IN BASIC FUEL PRICE



INTERNATIONAL PRODUCT PRICES OF BASKET USED IN BASIC FUEL PRICE



BASIC FUEL PRICE IN SA CENTS PER LITRE

